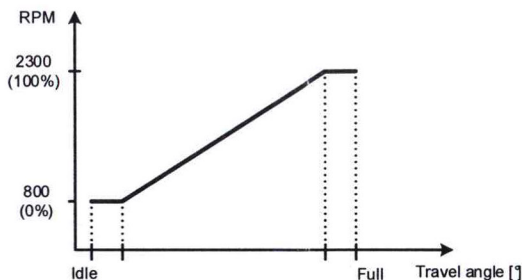
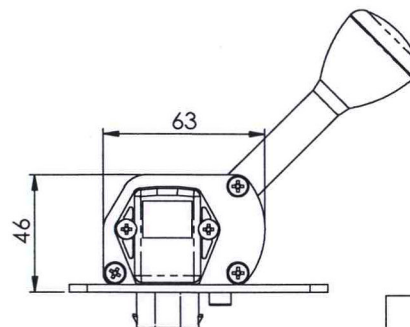
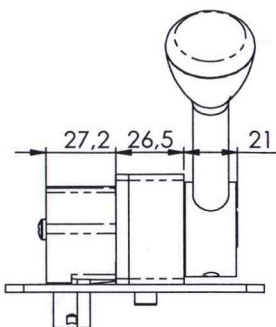
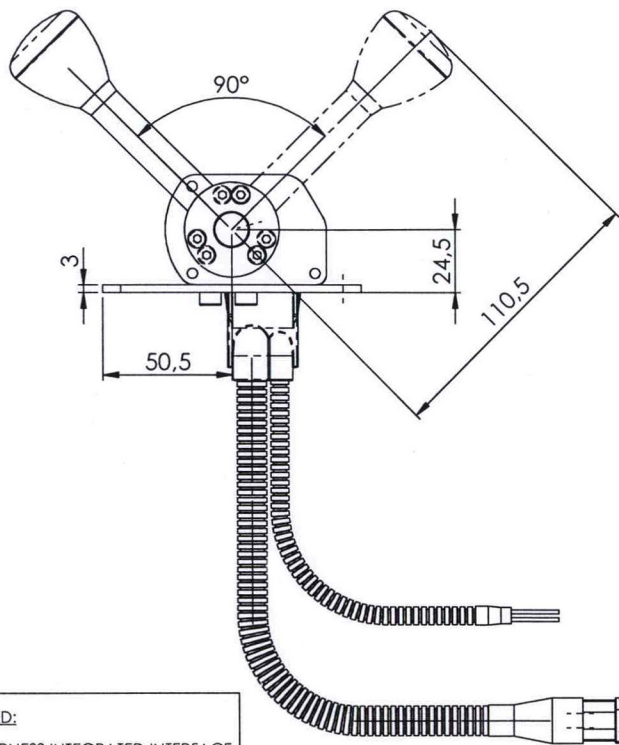


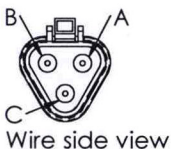
Idle

Full



Programming Disclaimer
 Throttle control is factory preset according to the values of this drawing.
 Any setting modification made by a third party will be the full responsibility of this third party.
 Date : .../.../.....
 Signature :

INCLUDED:
 WIRE HARNESS INTEGRATED INTERFACE
 PARTS N°: **PEHJ 0962 801 100**
 (801) = interface type
 (100) = length in cm
Not removable



- 1X Connector : Deutsch Nr. DT06-3S-E008
- 2X Pin gold: Deutsch Nr. 0462-201-1631
- 1X Pin extended gold: Deutsch Nr. 0462-221-1631
- 1X Lock Plate : Deutsch Nr. W3S

J1939 HARNESS

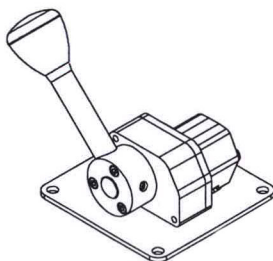
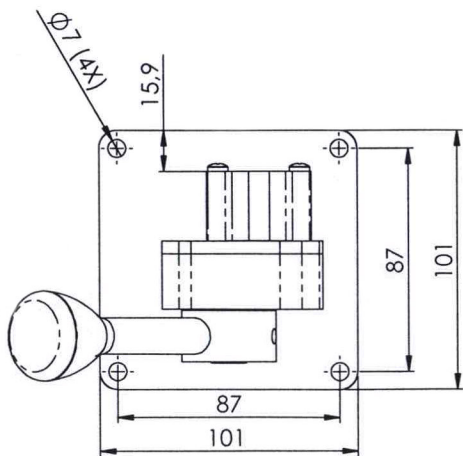
COLOR	PIN N°	DESCRIPTION
YELLOW	A	CAN HIGH
GREEN	B	CAN LOW
DRAIN	C	SHIELD

SUPPLY HARNESS

COLOR	DESCRIPTION
BROWN	0V GROUND
ORANGE	+8 .. 32VDC

SETTINGS J1939		Default factory settings
BAUDRATE	250kb/s	
CYCLE TIME	10ms	
SOURCE ADDRESS	SA [Prog: 0 - 253]	3 (03h)
ID	0C00003h [Prog: DA]	0x00
TSC1	SPN695 [prog: (00 to 11)]	(01b) Speed Control
	SPN897 [prog: 00 to 11]	(11b) Low Priority
	SPN898 [Prog: 0 to 8000]	800 - 2300 RPM
	SPN518 [Prog: (-125) or (00)]	00 (7Fh)
	SPN3349	(111b) TSC1 cyclic 10ms
	SPN3350 [prog: (00h) or (1Fh)]	(00000b) P1: APP
	SPN4191	(1111b) NA
SPN4206 [Prog: A/NA]	A: Counter activated	
SPN4207 [Prog: A/NA]	A: Checksum activated	

Prog=Programmable V1.2 ; NA=Not Activated or Not Applicable



UNLESS OTHERWISE SPECIFIED: DIMENSIONS ARE IN MILLIMETERS TOLERANCES: LINEAR: +/- 1mm ANGULAR: +/- 1°		FINISH:	PROJECTION:	DO NOT SCALE DRAWING	SIZE: A3
DRAWN: JST		CREATED DATE: 10/05/2021		PART N°: 972 890 25	
CHK'D: SB		REV. DATE: 11/05/2021		TITLE: Hand Throttle Control CAN J1939	
MATERIAL:		DWG NO.: 506 733	REV: -		
This drawing is confidential and remains the sole property of Mobile Control Systems S.A. This document is protected in accordance with the prevailing law.		WEIGHT: - gr	SCALE: 1:2	SHEET 1 OF 1	